

Tui! Tui! Tutua!

Quarterly newsletter of the Tairāwhiti Museum & Art Gallery
Te Whare Taonga o te Tairāwhiti
Autumn 2011 ISSN 117-4975

Exhibitions, News & Events



LEGACY



18 February - 3 April

Legacy Royal Portraits from Government House

Legacy, an exhibition from the National Portrait Gallery, consists primarily of royal portraits from the Norrie Collection gifted to New Zealand by Sir Willoughby (Governor General of New Zealand 1952-57) and Lady Norrie in 1957. This exhibition will be one of the highlights of the art gallery exhibition programme in 2011.

The history of the British Kings and Queens was once a core part of the New Zealand school curriculum. Today few adults and even fewer children are able to recite this royal lineage, unless they read historical novels and attend the films that have revived popular interest in Henry VIII, Mary I and Elizabeth I in particular. Their portraits will be a primary focus for visitors to this exhibition. No doubt the portrait of Oliver Cromwell, Lord Protector during the Commonwealth Period 1653-58, will also attract much attention. Cromwell was responsible for the beheading of King Charles I, whose portrait is also included in the exhibition.

Also included in the exhibition is Sir Nathaniel Dance-Holland's portrait of Captain Charles Clerke, painted in 1776. Clerke sailed as a master's mate with Cook on the Endeavour on his first Pacific voyage when first contact was made with Māori at Turanganui. The portrait, thought possibly to have been commissioned by Joseph Banks, was later owned by Admiral Isaac Smith, Mrs Elizabeth Cook's cousin. Both Banks and Smith also sailed with Cook on the Endeavour. This portrait is thought to be the first painting in oils of a Māori and European together.



A STORY OF QUILTING - A TRIPTYCH JOURNEY



11 March - 17 April

A Story of Quilting A Triptych Journey

The Gisborne Quilters collective has been meeting monthly for more than 25 years, providing a supportive and creative environment for people who want to learn the basic skills and those experienced quilters who continue to develop their creative talents. Every two years the collective exhibits members' quilts at Tairāwhiti Museum and Art Gallery. These exhibitions have always been very colourful and drawn large numbers of visitors.

Exhibitors have been asked to create a series of three works; the first of which will use traditional techniques, the second will incorporate the use of new materials, and the third will reflect contemporary design. This year the exhibition will include quilts made by Donna Rowan and Lynn Nunn who live outside the region but who have a long association with the collective. A CD with images of all the works in the exhibition will be available for \$10 at the museum during the exhibition.

THE LABOURS OF HERAKLES



29 April - 19 June

The Labours of Herakles Marian Maguire

Marian Maguire graduated with a major in printmaking from the Ilam School of Fine Art, University of Canterbury, in 1984. Maguire is now recognised as one of New Zealand's leading printmakers and master printers. In 1996 she established PaperGraphica print studio in Christchurch. She is now widely known for three major suites of prints that explore aspects of New Zealand history. The suites of prints are entitled *Mythical Landscapes* (2000), *The Odyssey of Captain Cook* (2005) and *The Labours of Herakles (as a New Zealand Pioneer)* (2008). *Mythical Landscapes* sets Greek heroes in the New Zealand landscape and *The Odyssey of Captain Cook* explores the first encounters of European and Māori.

The Labours of Herakles (as a New Zealand Pioneer) explores aspects of New Zealand's pioneer history. Visitors to the exhibition will be intrigued to see the way in which Maguire has included Herakles in familiar images from the colonial period. Herakles, also known as Hercules, is sometimes characterised as the greatest of the Greek heroes. Herakles' strength and cunning in his engagement with the seemingly impossible Twelve Labours, set for him by King Eurystheus, evoked for Maguire the endeavours of the early colonists.

Marian Maguire will speak at the opening of her exhibition *The Labours of Herakles (as a New Zealand Pioneer)* at Tairāwhiti Museum and Art Gallery at 5.30pm Friday 29 April. She is also conducting a seminar for printmakers at the museum at 10am Saturday 30 April.

SCENE IN TOKOMARU



8 April - 22 May

Scene In Tokomaru Historical Photographs of Tokomaru Bay

The recent addition of two significant photographic collections has prompted the exhibition *Scene in Tokomaru*. Images from these collections and others found within the existing photographic collection will be selected to display scenes of the Tokomaru Bay area. Dating from the early 1900s the photographs provide changing views of the landscape, township, port, the bay and its people.

Scene In Tokomaru will also 'hit the road'. The exhibition will be toured to Tokomaru Bay giving locals the chance to spend more time enjoying these historic photographs. It is hoped the pictures may jog memories and that more information can be added to the museum's records.

ARTISTS AND POTTERY GROUP ANNUAL EXHIBITION



27 May - 26 June

Artists and Pottery Group Annual Exhibition

A feature of the gallery year is the annual show by members of the Artists' Society who are reminded that there has been a change of dates. Originally, this was scheduled to open in March but the new date is 27th May. So – quite an extension of time to complete that work and get it into Lysnar House by the last receiving day: MAY 13TH.

The long association of artists and potters with the Museum is one that goes back to the formation of both organizations. Local people often do not realise that a small but active society of artists was the driving force behind the establishment of a museum for the district, many decades ago. The rest, as they say, is history!

The Artists' Society has a thriving membership and the annual show is an excellent opportunity to have work expertly hung in a spacious and well lit area for a month. Selection of works will again be in the hands of Mr Dick Calcott rather than a panel from the Committee. Last year's show was thoroughly representative of the wide variety of styles and techniques that this district produces and received a very positive response from the public.

Get those works finished; ensure you are a member of both Friends of the Museum and the Artists' Society and submit! We look forward to seeing them.

Norman Maclean

Images left to right:
Queen Elizabeth I - Mather Brown
Captain Charles Clerke - Sir Nathaniel Dance
The Silk Rose - Poll Williams
Herakles goes to Gallipoli - Marian Maguire
Tokomaru Bay - Miller Collection, Tairāwhiti Museum
Hymn to Thanatos - Norman Maclean

EXHIBIT CAFE



Exhibit Café is open for lunches, brunches, morning and afternoon teas. Select from the delicious range of pasta, frittata, soup, panini, bagels, salads, sandwiches, muffins and cakes. There are quiet spots for you and a friend to meet or larger tables for families or groups to celebrate a special occasion.

Moy Chan and her staff do all the baking on the premises, use predominantly local ingredients and cater to a variety of dietary needs including gluten free options. Exhibit Café offers catering services for meetings, courses and exhibition openings.

Opening hours: 10.00am to 3.00pm. Monday to Saturday.

Enquiries contact: Moy Chan at the Tairāwhiti Museum on (06) 867 3832. Mob: 027 415 701. Email: moychan@xtra.co.nz



ARTBEAT GALLERY SHOP



The Passing World, The Passage of Life: John Hovell and the Art of Kōwhaiwhai by Damian Skinner showcases the life and art of John Hovell. With over 100 colour images this hard-cover publication is an important resource for anyone interested in Māori art.

Artbeat Gallery Shop, the museum shop, sells a wide range of art and craft items including prints, paintings, pottery, inlaid wooden bowls and boxes, jewellery, bone carvings, kete, and weavings. Books about the history of Gisborne and the wider region, particularly on historic places, and on New Zealand art are also available.

Artbeat Gallery Shop sells pottery created by local potters David Hope, Hew Lloyd and Seymour May, woodwork by John Hall and weaving by Sarah Spence. You will find a unique birthday gift at Artbeat for a very reasonable price. Our staff are very helpful and gift wrapping is part of the service.

March Special: *The Passing World, The Passage of Life: John Hovell and the Art of Kōwhaiwhai* ONLY \$35



CONCOURSE GALLERY



11 February - 20 March

Guatemalan Textiles
Guatemala is the northernmost country in Central America. Mayan culture flourished in Central America from 250 BC to 900 BC. Some aspects of Mayan culture from this period, including textile designs, have been maintained by Mayan Indians. These customary arts have even survived the dramatic changes that followed the arrival of the Spanish in 1519. There are over 4 million people living in Mexico and Central America who identify as Mayan. The textiles produced by each Mayan community have their own distinctive patterns, designs and colours.

The Guatemalan textiles exhibited in this gallery are from Professor Jack Richards' private collection. Professor Richards discovered Guatemalan textiles on his first visit to the old colonial city of Antigua, near Guatemala City, about 20 years ago. The textile market in Antigua sells textiles from all over Guatemala. Professor Richards states: 'I have purchased things there every time I visit and will doubtless continue to add to the collection on future visits.'

DIRECTOR'S COMMENT



28 March - 8 May

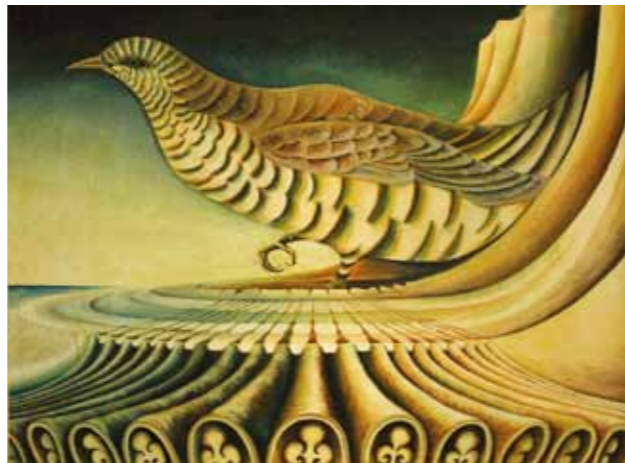
Treasured Possessions

Jewellery and Silver from the Museum Collection

Following the documentation of the museum's historic jewellery collection by Margaret Wirepa it was decided that a selection of jewellery from the collection would be exhibited. Margaret Wirepa and Margaret Mettner have selected 27 items of jewellery for the exhibition, half of which come from the Lysnar Collection gifted to the museum in 1955. The selected treasures include brooches, necklaces, cameos, an agate pill box, and a locket. The oldest item in the exhibition is a gold watch and key dating to 1828. Twelve sterling silver accessories for men have been selected by Tony Field from the museum's silver collection to be exhibited with the jewellery. These items include sovereign cases, match cases and propelling pencils.

The cameo brooch illustrated above is from the Lysnar Collection and is dated circa 1880.

DIRECTOR'S COMMENT

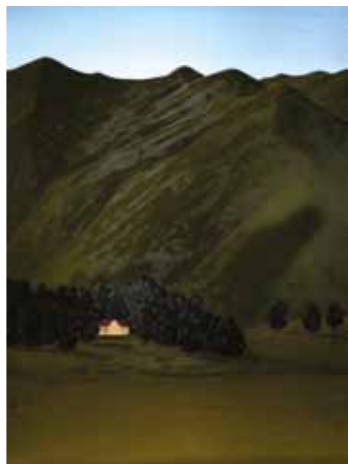


East Cape Garden Series - John Hovell

Director's Comment

The museum trustees are conscious of the need to continue to maintain adequate facilities for the care of the collections and the provision of exhibitions and other public programmes. At the present time priority has been given to planning for the provision of new collection storage, a loading bay and adequate workshop facilities. Within the last twelve months there have been significant additions to the fine arts and historical collections. Proposals are now being developed that will provide adequate storage for the growth of the collection for the next fifty years.

The museum's fine art collection is continuing to grow each year as a result of both gifts and purchases. For example, following his recent retrospective exhibition at the museum and art gallery, John Hovell gifted the museum four major paintings from his *East Cape Garden Series* painted in the 1970s. The museum is also able to purchase significant art works from time to time that fill gaps in the collection. A recent example of this is the acquisition of *Poverty Bay Landscape* by Geoff Tune. Tune went to school in Gisborne before attending the Elam School of Fine Arts at Auckland University. Although he remained living in Auckland he has continued to create works that reference the East Coast landscape.



Poverty Bay Landscape - Geoff Tune

FRIENDS OF THE MUSEUM



Friends of Tairāwhiti Museum

Thank you to all the Friends who responded to the survey last year. It is quite clear from the survey that members support the continuation of the lectures associated with the museum and art gallery exhibition programme. There was also support for the committee to organise a fieldtrip this year and the committee is currently exploring options. The committee wishes to acknowledge the assistance of the Gisborne District Council Creative Communities Scheme in subsidizing the *Art in Public Places* lecture series in 2010. The committee also acknowledges the assistance of Alan de Lautour (Chrisp and Davidson) with the annual auditing of the Society's accounts.

Following a positive response from members in the recent survey, the Friends Committee has decided that it will assist the museum to collect the work of local artists and also assist with building a collection of major New Zealand print makers. The two prints that have been purchased are *The Sound of Music* by Gisborne artist Brian Campbell (illustrated above) and *Ochre Tiki* by Dick Frizzell who participated in the Friends Lecture Series in 2010.

Friends' Autumn Lecture Series: March - May 2011

Legacy Exhibition
Avenal McKinnon, Director of the National Portrait Gallery, Wellington, will present a floor talk in the *Legacy* exhibition at 5:30pm on Tuesday 22 March. This will be a wonderful opportunity to hear about the research that has been done on the provenance of these paintings of the English royal family.

The Labours of Herakles – Marian Maguire
The artist Marian Maguire will speak at the opening of her exhibition *The Labours of Herakles* at 5.30pm on Friday 29 April. She will also present a seminar for printmakers and interested members of the Friends on Saturday 30 April from 10am to 3pm. The seminar will be about her work as both printmaker and master printer.

H B WILLIAMS MEMORIAL LIBRARY

God Save the King Pene Walsh

Charles is heir apparent, but will Charles or William be the next King of England? Will we in Aotearoa New Zealand continue to acknowledge the reigning English sovereign as our head of state? Whatever happens we know public obsession with members of the royal family will still sell thousands of newspapers and women's magazines as it does even in a non-Commonwealth country such as the United States where articles related to Princess Diana are still highly prized.

The media frenzy surrounding the royals has always arisen on the occasion of their births, deaths and marriages. Indeed Diana's untimely death has not only been blamed on media interference but also fed the paparazzi for over a decade after she died. Even when having an affair with Camilla, Charles simply didn't provide enough spice for the tabloids and his face on a cover does not sell magazines in the same way Diana's could.

William Arthur Philip Louis Windsor, Prince William, is blessed with good looks and is possibly the most photographed royal of all time. Today, when photographers point and click their cameras at members of the royal family, no matter the occasion, they create digital images the world may view within moments. In contrast, just 80 years ago when members of the royal family were photographed, this was likely to be the result of a staged production. Prior to that, images we have of monarchs were painted by specially appointed royal portrait painters. Portraits took weeks or months to create, with the subject often required to sit for dozens of sessions with the artist. The resulting paintings are often powerful legacies. Of course, contemporary members of the royal family still sit for formal portraits but for the public the photograph reigns supreme.

Editors everywhere rejoice with the opportunities that William's engagement to Catherine Elizabeth Middleton (a commoner no less!) provides to sell more papers and magazines. It helps that Kate, too, is very attractive. As soon as the engagement was announced not only did newspapers start to print extra copies but books too were produced. Publishers had been betting on Kate being the one and had material waiting to run off the press. One such book, *Kate and William: Celebrating a Royal Engagement* by Robin Nunn, was in fact conceived in Lithuania in 2006.



H B WILLIAMS MEMORIAL LIBRARY

Yes, the book is already on the library shelves and consists of photographs of William's early years, his years at St Andrews and Sandhurst, then Kate's growing importance in his life, with the inevitable comparisons with the Prince's late mother, Diana. Another hard covered, rather lavish production on the library shelves is *William and Kate: A Royal Love Story*, a better quality book written by *The Sun* journalist, James Clench.

Thirty years ago Charles and Diana were married accompanied by more accessories than Barbie and Ken wedding dolls. Today I bought a commemorative royal wedding coffee cup in a second hand store, which is surely the place where the memorabilia associated with the upcoming nuptials will end up. Early products lacking royal approval are not museum quality but nevertheless can be regarded as part of England's social history.



Far better to gaze upon the beauty of the taonga in the *Legacy* exhibition we have been privileged to host right here in Gisborne some hundreds of years after the portraits were painted in the homeland of some of our ancestors.



HB Williams Memorial Library has an **extensive collection of local artworks & photographs** available to borrow.

Create inspiration to any home, office, waiting room, real estate open home or just show off to your friends!

Visit our website to view the entire artwork collection www.gpl.govt.nz or pop in and see us on Peel St, Gisborne, Aotearoa.

Ph 8676709

