



Tairāwhiti
MUSEUM
Te Whare Taonga o te Tairāwhiti



TAIRAWHITI MUSEUM EDUCATION PROSPECTUS 2010

E ngā mana, e ngā wehi, e ngā tapu
mai Pōtaka ki ngā Tukemata o
Kahungunu rere atu ki Mōtu, hoki
rawa mai ki Tūranganui-ā-Kiwa, ko
tō koutou Whare Pūpuri Taonga o Te
Tairāwhiti, te waharoa ki ngā taonga
tuku iho e mihi nei.

Discovery:

Discover our Histories

Explore the Museum

Respond to Artworks

Engage with Communities



Welcome to the Tairāwhiti Museum Education Service for 2010

Programmes:

Our programmes utilize the museum's collections, archives and exhibitions, ensuring a Social Studies and/or Art focus. These lessons are alternatives that help you as teachers achieve your curriculum requirements - and more.

We cater for Kura Kaupapa Māori and Bilingual Classes by facilitating the lessons in Te Reo Māori.

Koha (donation)

While there is no charge for this service a koha is most welcome.

Duration:

90 minutes – 2 hours, but times are negotiable depending on topic.

2010 Term 1 + 2 Exhibition Calendar

| EXHIBITIONS | TERM 1 2010 Feb 02 – April 01 | | | | | | | | | | TERM 2 2010 April 19 – July 02 | | | | | | | | | |
|--|-------------------------------|---|---|---|---|---|---|---|---|----|--------------------------------|---|---|---|---|---|---|---|---|----|
| | 1 | 2 | 3 | 4 | 5 | 6 | 7 | 8 | 9 | 10 | 1 | 2 | 3 | 4 | 5 | 6 | 7 | 8 | 9 | 10 |
| Iwi Rākau: Dec – Feb 21 | | | | | | | | | | | | | | | | | | | | |
| Colored History: Feb 5 – Mar 28 | | | | | | | | | | | | | | | | | | | | |
| Treaty 2 U: Feb 26 – April 25 | | | | | | | | | | | | | | | | | | | | |
| ANZAC & Vietnam: April 02 – May 23 | | | | | | | | | | | | | | | | | | | | |
| Jack Straker & Romilly Brown: May 28 – July 4 | | | | | | | | | | | | | | | | | | | | |
| Jack Richards, Textiles: April 30 – July 11 | | | | | | | | | | | | | | | | | | | | |

2010 Term 3 + 4 Exhibition Calendar

| EXHIBITIONS | TERM 3 2010 19 July – 24 Sept | | | | | | | | | | TERM 4 2010 Oct 11 – Dec 20 | | | | | | | | | |
|--|-------------------------------|---|---|---|---|---|---|---|---|----|-----------------------------|---|---|---|---|---|---|---|---|----|
| | 1 | 2 | 3 | 4 | 5 | 6 | 7 | 8 | 9 | 10 | 1 | 2 | 3 | 4 | 5 | 6 | 7 | 8 | 9 | 10 |
| Body in Action: July 16 – Sep 19 | | | | | | | | | | | | | | | | | | | | |
| John Hovell: Sept 24 – Nov 05 | | | | | | | | | | | | | | | | | | | | |
| Juliet Bowen & Anna Citrolli: Oct 01 – Nov 14 | | | | | | | | | | | | | | | | | | | | |

CONTENTS

| | |
|--|-------|
| ART TOI – all ages | 6-10 |
| ART TOI – age restrictions | 11-13 |
| SOCIAL SCIENCES – all ages | 14-18 |
| SOCIAL SCIENCES – age restrictions | 19-20 |

CURRICULUM KEY

The following is a colour chart which indicates which curriculum areas the lesson engages.

-  Visual Arts
-  Social Science
-  Technology
-  Science
-  Mathematics
-  Drama
-  Māori
-  Health & Physical Education

ART TOI

all ages



Pasifika Art ●●

Three fun filled lessons looking at traditional Pacific art forms and Pacific artists. Students will use a variety of materials to create 2D and 3D works with an inspired contemporary twist. Lessons include: Lei Making ● Making Pacific Fans ● Pacific Tapa - using Indian ink or print-making techniques ● Pacific Mixed Media Paintings ● Polynesian Tapa Prints.



Matariki Art ●●●●

Exciting lessons celebrating Matariki.
Matariki Art: Create an art piece based on the constellation Matariki.
Lessons include Night Sky Creations, Seven Sisters, Matariki Star Gazer.



People: Look at Me ●●

The art of portraiture has long been a desired art form and in these lessons the thought and process behind portraiture will be examined. Students will utilise the museums portraits as inspiration for their own work, which focuses on proportion and self observation.



People: Funny Faces ●

Using a variety of mediums students create an art work based on caricature faces which reflect different feelings and our interpretation of different characters. Students will explore how simple lines and dots used in different combinations can simply portray an easily recognized feeling. A fun activity using, potato print, dye and straw, cartoon caricature drawings and pastel.



People: Abstract Faces ●

Students will create an abstract, Picasso inspired cubist portrait, using pastel or paint.



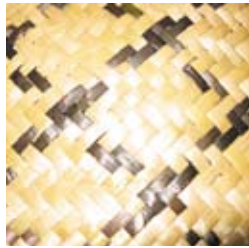
Native Birds for the Garden ●●●●

Take a look at our collection of stuffed birds and models. Students will then create a bird using a variety of materials. Birds will be 3D and are intended to be placed in your garden at home or can be staked in a class pot plant. A fun and colorful lesson!



Koru Creations/Ko wai au? ●●●●

Design an abstract piece with crayon and dye by using 3 traditional Māori designs to depict a story about themselves and their whānau (family).



Harakeke-Raranga ●●●●

An introduction to flax weaving, with a hands-on experience in weaving an article. Within this lesson will be an exploration of cultural beliefs and values associated with the plant and craft.



Māori Musical Instruments ●●●●

Demonstration, explanation and participation of Māori musical instruments. Students will create their own instrument made from a variety of materials. Koauau/Nguru (flutes).



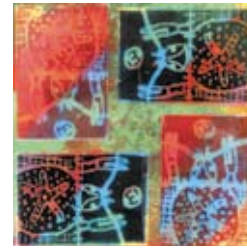
Korowai/Cloak ●●●●

A choice of calico or paper is used to create a mini cloak based on traditional and contemporary korowai. Students are able to examine cloaks in the museum's collection, then use a combination of natural resources to produce their own masterpiece.



Sensational Shells ●●

Using the museum's collection of beautiful shells students will explore linear, tonal and textural qualities. Students will use real shells and pictures to make observations from nature of patterns and tones. They will then create their own sensational shell pictures.



Press a Print ●

Students will create their own prints using the museum's collections and galleries as inspiration for their designs. A simple but effective printmaking technique using polystyrene trays is employed. Students will also view and discuss the work of a variety of printmakers.



Uku - Clay ●●

A chance for students to experiment with clay and complete their own clay masterpiece.



Giants of the Sea ●●

Story telling and drama is the motivator for this art creation. This lesson stands alongside the 'Giants of the Sea' lesson advertised in Social Sciences. Students will create a torn paper, dye and glitter scene with Paikea as the centre focus.



Paint like the Artist ●

This is an opportunity for students to view a current exhibition and a feature artist's work held in the museum's art gallery. They will look at the painting techniques of the feature artist and look at images by other artists who have influenced their work. Students will produce a piece of work in the style of the feature artist. This is a 2 hour lesson.



Know This Place ●●●

Students will create a mixed media artwork exploring Turanganui a Kiwa, focusing on the rivers and the landscape before the arrival of Captain Cook. This art work will serve as a local history story board. A great way to combine a history lesson with art.



Pop Up Through a Porthole ●●

Come and explore the bottom of the ocean on board the Star of Canada. Students can create a pop-up world of swimming fish, deep sea divers and sunken treasure. This is a wonderful lesson for students of all ages.



Beware of the Floating Jellies ●●

Jellyfish are beautiful luminous creatures - BUT beware their terrible sting. Visit the jellyfish installation and create a magical water colour painting, or mixed media picture of these graceful underwater ballerinas moving through time and space.



Koru, Colour Mixing Collage ●●

Students will explore the museum for examples of traditional Maori pattern and art design to inspire their own simple colour mixing collage. Colour theory and mixing is the base for this lesson.
Great for juniors

ART TOI

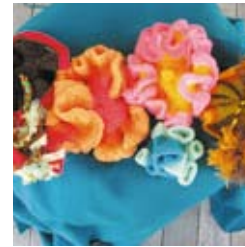
age restrictions



Paper/Fabric shape clown ●

Students will create a colourful paper and fabric clown using geometric shapes and various exciting resources. Students will focus on geometric shape, colour theory and combinations of pattern and plain to create their clown. A fun lesson for primary aged students.

Years 1-8



Crocheted Coral reef ●●●

The coral reefs of the world are threatened and so too are the handcrafts of yester-year. Students will have the opportunity to learn some simple wool craft techniques and create a fabulous fibre figure from the deep.

Years 5+



Carving ●●●

A 3 hour session dedicated to the sacred art of carving, incorporating traditional themes. Students will learn about Tairawhiti carving styles, facial proportion, iwi koruru differences and carving cuts, by creating their own carved face.

Years 5+



Camouflage Creatures ●●

Looking at native NZ bush creatures, create a camouflaged textured picture to give the effect of creatures camouflaged in their natural habitat.

Years 1-6



Mask Making - Koruru ●●●●

Students will create and produce a painted cardboard 3D mask based on carved Māori faces seen on pou (carved posts). This is a 2 hour lesson.

Years 5+



Manutukutuku/Kites ●●●●

A hands on activity where students can demonstrate their kite-making skills using mostly natural resources to produce a traditional Māori kite.

Years 1-3 Bird Man Kite (see below)

Years 5+ Traditional Manutukutuku (see below)

Manutukutuku Yrs 5+ Birdman Kite Yrs1-4



Bush Flowers/Sea Stars ●●

This is a paint, crayon and dye lesson, using scratch back, wax resist and relief techniques to create a 2D picture depicting our native bush or sea. Great for juniors!

Years 1-6



Me the Pou ●●●●

Students will look at contemporary Māori works by Derek Lardelli and create a mixed media 3-dimensional pou. This lesson involves construction and design.

Years 4+



Stained Paper Windows ●

A wonderful introduction to a selection of NZ artists, stained glass windows, basic colour theory and painting techniques. Combine all three and create a stained paper window!

Years 4+



Watersheds Gallery: Art Works From the Cellar ●

This is a unique opportunity to view artworks from the museums exquisite art collection. Students will then create a piece of work in response to the work(s) chosen.

Artists include: Robyn Kahukiwa • Sandy Adsett • Dean Buchannan • John Walsh • Faith McMannis • Mike Tupaea

Years 4+



Watersheds Gallery: Planted History - Areta Wilkinson ●●

Look at the plant specimens from the Banks' garden near the Cook memorial, discuss the significance of gathering, collect plant matter from Kelvin Rise Park, document findings in a painting which explores rubbings, stenciling, layering and text.

Years 4+

SOCIAL SCIENCES

all ages



Te Unga Mai ●●

This 2 hour interactive lesson depicts the Tairāwhiti area before and after Captain Cook's arrival, focusing on navigation, discovery and the meeting of two cultures. An art lesson titled "Know Your Place" is also available to enhance learning.



C Company, Māori Battalion ●

Mobile Exhibition

An informative lesson on WW2 looking at the history behind the formation of C Company. An audio visual presentation and interactive activities help to bring alive the memories of these heroic men. This MOBILE C Company exhibition was created to enable educators to bring and teach this powerful lesson in your district, while the permanent C Company exhibition is being relocated.



Anzac ●

This lesson involves static exhibitions, an interactive experience and video clips which will enable students to get a glimpse of what life was like for those serving overseas and those left at home.

SOCIAL SCIENCES | all ages



Matariki - Constellation ●●●●

Students will be engaged in a number of activities to explore the significance and traditions associated with the Matariki celebrations in June. An art lesson titled "Matariki Art" is also available to enhance learning.



Our Place ●

Learn about Gisborne's history, from its conception to the present day. Learn some of the historical developments and events that took place to shape our town, Learn about some of the prominent people of our community who have shaped our identity.



Voyaging ●●●

Students will examine the various voyaging exploits that our ancestors, both Māori and European utilised when coming to Te Tairāwhiti. Our waka collection, Te Moana and the new 'Watersheds' exhibition highlight historical voyaging vessels, instruments and methods used. Through story telling, students will learn about these historical events. Students can construct their own waka or Endeavour as an extended art lesson.



Games of the Past ●●●●●

Have fun playing games enjoyed by early Māori children and early European children in NZ. Students will explore games and how they have changed over time. Explore how the environment and different cultures influence different past times.



Marae ●●●●●

Museum educators are available to help prepare your students for a Marae visit and facilitate lessons during the visit. Lessons offered include: Pōhiri/Karanga/whaikōrero/waiata/mihi • Marae protocol • Maori Art • Maori Craft ie: Weaving, carving, tukutuku • Maori Games • Historical Walk • Waiata/Poi/haka. This is an excellent introduction for a class visiting a marae.



Horouta ●●●●●

Through storytelling and process drama, students become the crew of the Horouta waka and role play the events that led to it's arrival in Te Tairāwhiti. Students gain a much deeper understanding of the chant Haramai a Pāoa and/or Te Papatipu o Horouta, and also are able to associate the many Tairāwhiti place names to the events of this historical story.



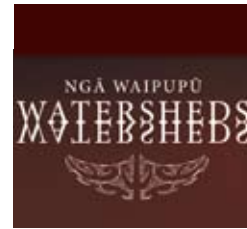
Star of Canada ●●●●●

A real life shipwreck - what fun! The Star of Canada is "hands on deck" history. Students will look at why this mighty boat stranded on Kaiti Beach, how it was transformed into a house, and what it was like to be living and working on it. Check out the new fun and colourful underwater sea installation in this gallery. Art, Drama and Social Science lessons are available.



Communications ●●●●●

View our collection of communication technology through the ages. How did people communicate pre-texting and internet?? Have our communication skills improved with improved technology? Students will engage in interactive activities to challenge thinking and consolidate learning.



Watersheds ●●●●●

Explore our new "Watersheds" exhibition, which traces the history of Tairāwhiti from earliest settlement through until the present day. Numerous themes can be explored in this exhibition; Maori themes: Tools and implements, Musical instruments, Rongoa - medicine, Marā kai - gardening, Voyaging, Carving styles, Art work. Captain Cook, Tairāwhiti conflict, Industry, Historic People, Recreation. Students also have the opportunity to learn how to read, engage and interact with the exhibition, enabling them to build their confidence in a museum context.



Kiwiana and Iconz ●●●●●

"She'll be right" as we sing the "Gumboot" song. This lesson takes a look at items and pictures that make New Zealand special. Learn some of the history behind these items. Students will view a comprehensive power point and explore the museum in a Kiwiana treasure hunt.



Historic Monument/Bridges Walk ●●●●●

This is a historical walk around the inner city which can focus on our numerous monuments, historic buildings and/or bridges and the three rivers. This guided tour is a brilliant way to learn about local historical events and people that have shaped our city. Students will be able to identify the changes that have taken place over time.



Manage our Place ●●●●●

This lesson explores Maori practices and beliefs around environmental sustainability. How Maori interacted with their natural environment to ensure it's health and viability and what role Rangī and Papa and their children played. Discover the tikanga/ practices of rāhui/sustainability and kaitiakitanga/guardianship for both land and sea. This lesson is designed to support the enviro schools "Me and my Environment" programme.



My Place and Me ●●

Explore your local school environment. We can assist you with research to: Discover historical events, information and stories from the area your school is based. • Make connections to local Iwi, Hapu and Marae. • Identify prominent landscape features and how they are related to tangata whenua. • Discover how the landscape has changed over time. **Advanced booking is essential for this lesson!**



Ruatepupuke The story of how carving originated ●●●

Discover the origins of carving through the dramatisation of the well known Tairāwhiti story of Ruatepupuke, who discovered whakairo/ carving under the sea and first made wood carving known. Students will be engaged in role play of the story and will explore the museum's galleries and collections to identify and make comparisons of the two carving styles prominent in this region. Other lessons associated with carving are also available.

SOCIAL SCIENCES

age restrictions



It's all in a name ●

Discover how the names of the region, city, parks and streets of our community have got their names and how some of these places have been changed over time. Look at the reasons behind these changes. What social implication does this have?

Years 5+



Nanny and Papa ●●

Learn about life in the old days through household chores like washing, butter-making and more. Explore household items of the past, old toys and games as well as dress up in clothing of the past. Visit Wyllie Cottage, the oldest European house in Gisborne, built in 1872.

Years 1-8



Early Schooling ●●●

An interactive activity that has Miss Ticklepenny, a teacher from the past role play how schools operated long ago. Students use slates, quill and ink, play school yard games, dress up in olden-day clothes, look at old school uniforms and more.

Years 1-8

SOCIAL SCIENCES | age restrictions



Living Rivers/Nga Wai Weherua ●●●●

In this lesson students will: Discover how Gisborne Rivers have influenced it's people and how it's peoples have influenced the rivers

- Carry out simple experiments and investigations to draw conclusions about the health of the rivers
- Make decisions about our roles and responsibilities in the sustainability of our rivers.

Years 4+



Garments of Yester-year ●●●●

Investigate the types of textiles and garments worn by pre-European Maori and colonial settlers. Examine garments from the museum's collections and galleries. Explore the different values and beliefs that influenced what was worn, how it was worn, and why it was worn. Compare these with garments, textiles, fashion and values of today.

Years 4+



Digging up the Past ●●●●

Hands on activities dominate this lesson, which engages students in learning about their history in a scientific and practical way. The excavation at Uawa sets the scene for students to learn about archeological techniques, vocabulary, equipment and methodology as they discover artefacts from the museum collection, and engage in their own dig to uncover the mysteries of the past.

Years 4+

RETHINK

Have you and your class visited the Rethink Environmental Education Centre? The Rethink Centre can take up to 30 students for an interactive learning experience. Classes run for 1 hour but can be extended. Contact Council to make a booking and to discuss assistance with travel.

Choose from the following:

- **How long does it take to breakdown?**
Discover the benefits of recycling over littering and landfilling.
- **Where do everyday things come from and what happens to them when they 'go'.**
Discover what things are made from and how this affects them at the end of their life.
- **What can I recycle – the ins and outs of recycling**
Discover why, what and where to recycle and how to close the loop.
- **What can I do with this apple core – worms and more**
Discover how your scraps can make valuable plant food.
- **The 3Rs – Reduce, Reuse, Recycle – at Rethink**
Discover how consumption has changed and how we can look at the things we no longer have a use for.
- **What shall I buy at 'Choose 'n' Save'?**
Become better equipped to make shopping choices using everyday examples.



Contact Anne Lister, Environmental Health Educator
phone 867 2049 ext 8635 or 0800 653800 ext 8635;
anne@gdc.govt.nz; www.gdc.govt.nz



NOTES

HOW TO BOOK A LESSON

Phone (06) 867 3832 | Fax (06) 867 2728

Call us with the following information

- Kaupapa/topic you would like to book in for
- Preferred dates and times
- Year group and number of students
- Name and contact details of school and attending teacher
- Any special needs, e.g. wheelchair access, language of choice: either English and/or Māori

Or e-mail either of the Education Officers:

Jennifer Pewhairangi

jennpewhairangi@tairawhitimuseum.org.nz

Gayle Te Kani

gayletekani@tairawhitimuseum.org.nz

PUBLIC HOURS: Weekdays: 10am-4pm, Saturday: 10am-4pm, Sunday: 1.30-4pm

ADDITIONAL INFORMATION

We can come to you

We are able to give an introductory talk about our Education Services at your staff meeting or syndicate meetings. Please contact us to arrange a time.

Resources

Teachers may borrow some of our resources. We have a collection of native birds, Roamer Robots and various other items. Please call to find out if we can assist with your classroom display.

A place for your class to eat lunch

Have your class bring a cut lunch and relax under the museum's shade cloth and admire the funky mozaic seat, either before or after the museum programme.



Stout Street | P.O Box 716 | Gisborne
Ph: 06 867 3832 | Fax: 06 867 2728

www.tairawhitimuseum.org.nz/education