



TAIRĀWHITI
MUSEUM
EDUCATION
BOOKLET 2012



Tairāwhiti
MUSEUM

Te Whare Taonga o te Tairāwhiti

Haramai ra aku nui, aku wehi, aku
whakatiketike!

Mauria mai ā tātau tamariki,
mokopuna ki te Whare Pūpuri Tāonga
o Te Tairāwhiti, te waharoa ki ngā
tāonga ā kui mā, ā koro mā.

Discovery:

Discover our Histories

Explore the Museum

Respond to Artworks

Engage with Communities



Welcome to the Tairāwhiti Museum Education Service for 2012

Programmes:

Our programmes utilize the museum's collections, archives and exhibitions, ensuring a Social Studies and/or Art focus. These lessons are alternatives that help you as teachers achieve your curriculum requirements - and more.

We cater for Kura Kaupapa Māori and Bilingual classes by facilitating the lessons in Te Reo Māori.

Koha (donation)

While there is no charge for this service a koha is most welcome.

Duration:

90 minutes – 2 hours, but times are negotiable depending on topic.

2012 Terms 1-4 Exhibition Calendar

EXHIBITIONS	TERM 1 (Jan 30 – Apr 5)
Prior Collection – NZ Paintings	February 3 – April 1
Andrew Gordon – Wood as witness	February 10 – April 15
Stella Goodall – Forever	February 17 – April 9
Mirek Smisek – Ceramics	April 5 – May 20

EXHIBITIONS	TERM 2 (Apr 23 – Jun 29)
Museum Fine Arts Collection	April 20 – June 10
Gisborne Artists and Potters	April 13 – June 3
Transit of Venus Te Ara Kōpu	June 1 – July 27
Jo Torr – Textiles	June 8 – July 29
Star of Canada – 100 years	June 15 – August 5
The Art of Science	June 27 – September 16

EXHIBITIONS	TERM 3 (Jul 16 – Sep 28)
Jean Loomis/Landscape on Aluminum	August 3 – September 23
Waioeka Brown Collection	August 10 – September 30
Top Art	August 10 – August 14
Baye Riddell – Ceramics	September 21 – November 11
Pounamu – Museum Collection	October 5 – November 25

EXHIBITIONS	TERM 4 (Oct 15 – Dec 20)
Graeme Mudge – Paintings	October 15 – November 18
John Hovell	November 16 – January 2013
Toihoukura	November 23 – January 2013

CONTENTS

ART TOI – all ages	6-9
ART TOI – age restrictions	10-11
SOCIAL SCIENCES – all ages	12-16
SOCIAL SCIENCES – age restrictions	17-18

CURRICULUM KEY

The following is a colour chart which indicates which curriculum areas the lesson engages.

- | | | |
|--|---|--|
|  Visual Arts |  Social Science |  Technology |
|  Science |  Mathematics |  Drama |
|  Māori |  Health & Physical Education | |

ART TOI

all ages



Matariki Art ●●●●

Exciting lessons celebrating Matariki.

Matariki Art: Create an art piece based on the constellation Matariki. Lessons include Night Sky Creations, Seven Sisters, Matariki Star Gazer.



People: Funny Faces ●

Using a variety of mediums students create an art work based on caricature faces which reflect different feelings and our interpretation of different characters. Students will explore how simple lines and dots used in different combinations can simply portray an easily recognized feeling. A fun activity using dye and drinking straws, cartoon caricature drawings and pastel.



Abstract Tiki ●●●●

The tiki has become synonymous with New Zealand. Come and examine the museum's beautiful traditional tiki collection, study the cubist art of Picasso and create a stunning contemporary tiki masterpiece, Picasso styles.

● Visual Arts

● Social Science

● Technology

● Science



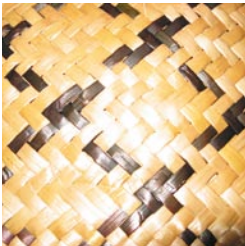
Native Birds for the Garden ● ● ●

Take a look at our collection of stuffed birds and models. Students will then create a bird using a variety of materials. Birds will be 3D and are intended to be placed in your garden at home or can be staked in a class pot plant. A fun and colorful lesson!



Koru Creations/Ko wai au? ● ● ●

Design an abstract piece with crayon and dye by using 3 traditional Māori designs to depict a story about themselves and their whānau (family).



Harakeke-Raranga ● ● ● ● ●

An introduction to flax weaving, with a hands-on experience in weaving an article. Within this lesson will be an exploration of cultural beliefs and values associated with the plant and craft.



Māori Musical Instruments ● ● ● ● ●

Demonstration, explanation and participation of Māori musical instruments. Students will create their own instrument made from a variety of materials. Koauau/Nguru (flutes).



Korowai/Cloak ●●●●

A choice of calico or paper is used to create a mini cloak based on traditional and contemporary korowai. Students are able to examine cloaks in the museum's collection, then use a combination of natural resources to produce their own masterpiece.



Press a Print ●

Students will create their own prints using the museum's collections and galleries as inspiration for their designs. A simple but effective printmaking technique using polystyrene trays is employed. Students will also view and discuss the work of a variety of printmakers.



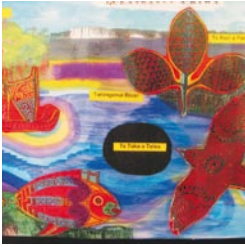
Clay Creations ●●

Students will examine selected clay art works from the museum's collection to encourage experimentation of various clay techniques. Using these techniques they will produce their own clay masterpieces. Jack Straker's funky creatures will also be used to inspire and motivate students to create their own magnificent creature.



Giants of the Sea ●●●●

Recycling and environmental sustainability is the primary motivator for this lesson. Students are asked to collect recycled blue paper and collage materials to assist in the creation of their "Giants of the Sea" paint and collage art piece. However, this lesson can be adapted to meet the learning intentions you have for the topic of whales.



Know This Place ●●●

Students will create a mixed media artwork exploring Turanganui-ā-Kiwa, focusing on the rivers and the landscape before the arrival of Captain Cook. This art work will serve as a local history story board. A great way to combine a history lesson with art.



Koru, Colour Mixing Collage ●●●

Students will explore the museum for examples of traditional Māori pattern and art design to inspire their own simple colour mixing collage. Colour theory and mixing is the base for this lesson.

Great for juniors

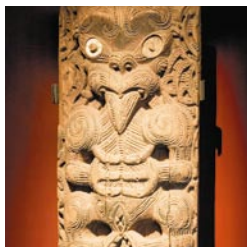


Graffiti ●●●

Is ancient rock art graffiti? Can something spray painted on a wall be art? There is a big difference between vandalism and the type of graffiti art that students will see in this lesson. In this lesson students will learn the history of the 'hip-hop' style of graffiti that informs the art made by local rangatahi. They will also make their own digital art in an awesome light graffiti session.

ART TOI

age restrictions



Carving ●●●●

A 3 hour session dedicated to the sacred art of carving, incorporating traditional themes. Students will learn about Tairāwhiti carving styles, facial proportion, iwi koruru differences and carving cuts, by creating their own carved face.

Years 5+



Camouflage Creatures ●●

Looking at native NZ bush creatures, create a camouflaged textured picture to give the effect of creatures camouflaged in their natural habitat.

Years 1-6



Manutukutuku ●●●●

A hands on activity where students can demonstrate their kite-making skills using mostly natural resources to produce a traditional Māori kite.

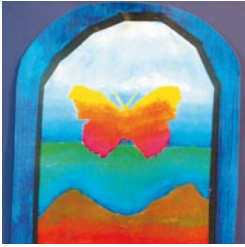
Years 5+

● Visual Arts

● Social Science

● Technology

● Science



Stained Paper Windows ●

A wonderful introduction to a selection of NZ artists, stained glass windows, basic colour theory and painting techniques. Combine all three and create a stained paper window!

Years 4+



Painted Histories ● ●

Examine the historic painted kowhaiwhai examples housed within the museum to explore the meanings behind the specific designs. Compare these to more contemporary art works created by a selection of well known New Zealand artists. Students will then create their own kowhaiwhai inspired art work depicting a Tairāwhiti story.

Years 4+



Paint like the Artist ●

This is an opportunity for students to view a current exhibition and a feature artist's work held in the museum's art gallery. They will look at the painting techniques of the feature artist and look at images by other artists who have influenced their work. Students will produce a piece of work in the style of the feature artist. This is a 2 hour lesson.

Years 3+



Birdman Kite ● ● ● ●

A great lesson for juniors as they begin their exploration into Māori kite making techniques. This lesson enables the students to create a contemporary kite using contemporary materials based on a traditional Māori style.

Years 1-4

SOCIAL SCIENCES

all ages



First Meetings ●●

This 2 hour interactive lesson depicts the Tairāwhiti area before and after Captain Cook's arrival, focusing on navigation, discovery and the meeting of two cultures. An art lesson titled "Know Your Place" is also available to enhance learning.



C Company, Māori Battalion ●

Mobile Exhibition

An informative lesson on WW2 looking at the history behind the formation of C Company. An audio visual presentation and interactive activities help to bring alive the memories of these heroic men. This MOBILE C Company exhibition was created to enable educators to bring and teach this powerful lesson in your district, while the permanent C Company exhibition is being relocated.



Anzac ●

This lesson involves static exhibitions, an interactive experience and video clips which will enable students to get a glimpse of what life was like for those serving overseas and those left at home.

● Visual Arts

● Social Science

● Technology

● Science



Matariki - Constellation ●●●●●

Students will be engaged in a number of activities to explore the significance and traditions associated with the Matariki celebrations in June. An art lesson titled "Matariki Art" is also available to enhance learning.



Our Place ●

Learn about Gisborne's history, from its conception to the present day. Learn some of the historical developments and events that took place to shape our town, Learn about some of the prominent people of our community who have shaped our identity.



Voyaging ●●●●●

Students will examine the various voyaging exploits that our ancestors, both Māori and European utilised when coming to Te Tairāwhiti. Our waka collection, Te Moana and the new 'Watersheds' exhibition highlight historical voyaging vessels, instruments and methods used. Through story telling, students will learn about these historical events. Students can construct their own waka or Endeavour as an extended art lesson.



Games of the Past/Toys ●●●●●

Have fun playing games enjoyed by early Māori children and early European children in NZ. Students will explore games and how they have changed over time. Explore how the environment and different cultures influence different past times.

SOCIAL SCIENCES | all ages



Marae ●●●●●

Museum educators are available to help prepare your students for a Marae visit and facilitate lessons during the visit.

Lessons offered include: Pōhiri/Karanga/whaikōrero/waiata/mihi
● Marae protocol ● Māori Art ● Māori Craft ie: Weaving, carving, tukutuku ● Māori Games ● Historical Walk ● Waiata/Poi/haka.
This is an excellent introduction for a class visiting a marae.



Horouta ●●●●●

Through storytelling and process drama, students become the crew of the Horouta waka and role play the events that led to it's arrival in Te Tairāwhiti. Students gain a much deeper understanding of the chant Haramai a Paa and/or Te Papatipu o Horouta, and also are able to associate the many Tairāwhiti place names to the events of this historical story.



Star of Canada ●●●●●

Hurricane winds, blinding rain and treacherous seas, played their part in the shipwreck, the Star of Canada. This young ship was blown onto the rocks at Kaiti Beach in June 23 1912. The museum commemorates 100 years of this maritime disaster. Drama and role-playing are key factors in this thrilling lesson which explores and examines the 'Star of Canada'.



Technology transformations ●●●●●

Technology has changed through the ages. Explore our collection of various olden day objects and compare them to technology today. Our range of topics can include: communication, toys, farming, gardening, fishing, cooking and household implements. Students will view and where appropriate handle objects and engage in interactive activities to challenge thinking and consolidate learning.

● Visual Arts

● Social Science

● Technology

● Science



Watersheds/Ngā Waipupū ●●●●

Explore our "Watersheds" exhibition, which traces the history of Tairāwhiti from earliest settlement through until the present day. Numerous themes can be explored in this exhibition; Māori themes: Tools and implements, Musical instruments, Rongoa - medicine, Mara kai - gardening, Voyaging, Carving styles, Art work. Captain Cook, Tairāwhiti conflict, Industry, Historic People, Recreation. Students also have the opportunity to learn how to read, engage and interact with the exhibition, enabling them to build their confidence in a museum context. This lesson encourages students to make observations and share their opinions about the objects displayed. It encourages critical thinking within a safe learning environment.



Historic Monument/Bridges Walk ●

This is a historical walk around the inner city which can focus on our numerous monuments, historic buildings and/or bridges and the three rivers. This guided tour is a brilliant way to learn about local historical events and people that have shaped our city. Students will be able to identify the changes that have taken place over time.



Manage our Place ●●●●

This lesson explores Māori practices and beliefs around environmental sustainability. How Māori interacted with their natural environment to ensure it's health and viability and what role Rangī and Papa and their children played. Discover the tikanga/ practices of rahui/sustainability and kaitiakitanga/guardianship for both land and sea.

This lesson is designed to support the enviro schools "Me and my Environment" programme.



My Place and Me ●●

Explore your local school environment. We can assist you with research to: Discover historical events, information and stories from the area your school is based. • Make connections to local Iwi, Hapu and Marae.

• Identify prominent landscape features and how they are related to tangata whenua. • Discover how the landscape has changed over time.

Advanced booking is essential for this lesson!

SOCIAL SCIENCES | all ages



Giants of the Sea ●●●

Tairāwhiti has a significant history concerning whales. There is Paikea, the whale rider, whaling as an industry and the Okitu whale stranding. Lessons can be delivered to suit your learning intentions concerning these magnificent giants of the sea. Please see the "Giants of the Sea" lesson in the Art section of the booklet to further support your study.



Winifred Lysnar at Wainui Beach, 1908.

● Visual Arts

● Social Science

● Technology

● Science

SOCIAL SCIENCES

age restrictions



It's all in a name ●●

Discover how the names of the region, city, parks and streets of our community have got their names and how some of these places have been changed over time. Look at the reasons behind these changes. What social implication does this have?

Years 5+



Nanny and Papa ●●

Learn about life in the old days through household chores like washing, butter-making and more. Explore household items of the past, old toys and games as well as dress up in clothing of the past. Visit Wyllie Cottage, the oldest European house in Gisborne, built in 1872.

Years 1-8



Early Schooling ●●●

An interactive activity that has a teacher from the past role play how schools operated long ago. Students use slates, quill and ink, play school yard games, dress up in olden-day clothes, look at old school uniforms and more.

Years 1-8

● Mathematics

● Drama

● Māori

● Health & Physical Education

SOCIAL SCIENCES | age restrictions



Garments of Yester-year ● ● ●

Investigate the types of textiles and garments worn by pre-European Māori and colonial settlers. Examine garments from the museum's collections and galleries. Explore the different values and beliefs that influenced what was worn, how it was worn, and why it was worn. Compare these with garments, textiles, fashion and values of today.

Years 4+



Historic Landscapes (Place Based) ● ●

Select a significant historic landscape in your community. Visit this historic site to learn about the events that took place there and the significant people who shaped that history. The museum educators will meet you at the designated site to conduct an appropriate place based lesson to meet your specific learning intentions. Please book well in advance for this lesson to allow time for research and specific preparation to meet your needs.

Years 4+



Cook Monument unveiled 1906 at Onepoto (Cook Landing Site).

● Mathematics

● Drama

● Māori

● Health & Physical Education

● Visual Arts

● Social Science

● Technology

● Science

HOW TO BOOK A LESSON

Phone (06) 867 3832 | Fax (06) 867 2728

Call us with the following information

- Kaupapa/topic you would like to book in for
- Preferred dates and times
- Year group and number of students
- Name and contact details of school and attending teacher
- Any special needs, e.g. wheelchair access, language of choice: either English and/or Māori

Or e-mail either of the Education Officers:

Jennifer Pewhairangi

jennpewhairangi@tairawhitimuseum.org.nz

Aaron Compton

aaroncompton@tairawhitimuseum.org.nz

PUBLIC HOURS: Weekdays: 10am-4pm, Saturday: 10am-4pm, Sunday: 1.30-4pm

ADDITIONAL INFORMATION

We can come to you

We are able to give an introductory talk about our Education Services at your staff meeting or syndicate meetings. Please contact us to arrange a time.

Resources

Teachers may borrow some of our resources. We have a collection of native birds, Roamer Robots and various other items. Please call to find out if we can assist with your classroom display.

A place for your class to eat lunch

Have your class bring a cut lunch and relax under the museum's shade cloth and admire the funky mozaic seat, either before or after the museum programme.

For regular updates, like us on facebook: search 'Education at Tairawhiti Museum'





Stout Street | P.O Box 716 | Gisborne
Ph: 06 867 3832 | Fax: 06 867 2728

www.tairawhitimuseum.org.nz/education