



- Eloise Wallace

While Tairāwhiti Museum is a small institution, and very much focused on community projects and programmes, it is heartening to have the museum, and its staff recognised in New Zealand and abroad for innovation, collaboration and creative, passionate people we have the privilege to work with in Tairāwhiti and it is wonderful to be able to work together to demonstrate national leadership from our region.

In September I will be co-presenting a keynote alongside Professor Kay Morris Matthews (ET) at the University of Canberra for the joint conference of the Australian and NZ History of Education Society and the Australian National Museum of Education. The conference theme will explore how educational historians and museums work together and we will be speaking about Recovery: Women's Overseas Service in WW1, as an example of a successful collaboration between historians working in the tertiary and the public sector.

This first the only example of Tairāwhiti Museum and local partnerships being recognised at the national and international level this year, in July, Tapunga Nepe, the museum's kaitiaki Māori will represent our region as the first New Zealand delegate to attend the British Museum International Training Programme. He will join 25 other museum and heritage professionals from around the world for the 6-week programme based at the British Museum.

At the conference our group – Hineitonihi Whānanga, David Jones, Johnny Moetara, Tapunga Nepe and myself shared the journey of developing the marae and museum-based exhibition series to conference delegates, and hopefully provided some inspiration for ways in which museums might support iwi in realising their aspirations for their taonga and their people.

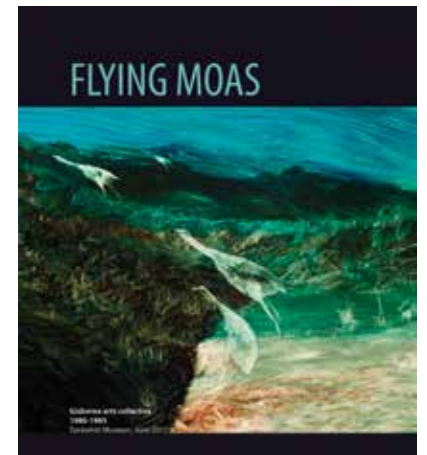
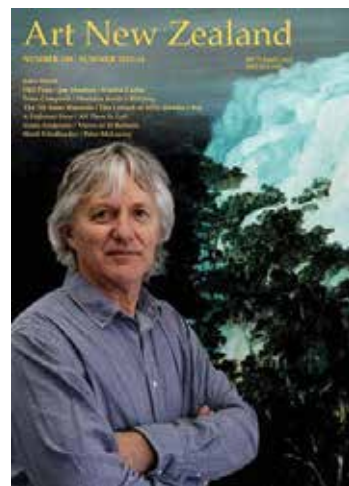
The award citation said that *Ko Rongowhakaata* "is unprecedented and the most innovative approach seen in indigenous museum practice in recent years. The methodology of this series of exhibitions is significant, an exemplar for how hapu and iwi are engaged and empowered throughout the exhibition process. A museum allowing the expert voices within its community to be heard, the community claiming ownership of their taonga and their museum, and the open-hearted and supportive team at the museum is awe-inspiring."

In May a delegation from Tairāwhiti Museum and Rongowhakaata attended the annual Museums Aotearoa conference, held this year in Palmerston North. We were honoured to win the 'Exhibitions Excellence – Taonga Māori' award for 2017.

FROM THE DIRECTOR

Aside from the art works themselves it is the written record of reviews and interviews in 'Cockroach', 'Art Stuff', local newspapers and other serials such as 'Art New Zealand' that contributes to keeping the story of this eclectic contemporary regional movement alive.

This busy creative period is now curated into a book. Sheridan Gundry has gathered the information into an important record of this time, including what the artists are creating now whilst simultaneously nodding to the next wave of local writers and artists.



A Flying Moa might be an idiom of improbability but in this rare case we have a flock circling the district ready to land. - Pene Walsh



Mon. - Sat. 10am-4pm
Sun. 1.30pm-4pm
Stout Street • Gisborne
06 8673832



https://www.facebook.com/tairawhitimuseumgisborne
https://tairawhitimuseum.wordpress.com/

Like us on Facebook and follow our blog to keep up to date with stories, events and goings-on at Tairāwhiti Museum.

School holiday programmes 10 – 21 July
Full schedule to be announced soon, see Facebook for more information

With thanks to Professor Jack Richards

King Wang (piano)	11 Jun	2pm
James Jin (violin) and King Wang (piano)	13 Aug	2pm
Alexander Boulton and Oscar Laven (jazz guitar)	9 Jul	2pm
Joe Haddow and Pasquale Orchard (vocal)	10 Sep	2pm
Emma Sandford and Joel Baldwin (classical guitar)	8 Oct	2pm

Sunday concert series, second Sunday of every month between May and September, 2pm
Adults \$5, Students with ID and children free

UPCOMING EVENTS

As a friend you can take advantage of free admission to the museum, a 10% discount in the museum shop, Exhibit café and on exhibition purchases, as well as invitations to exhibition previews and exclusive events. Friends also receive a 10% discount off the usual price for art supplies and framing from Personality Framers.

Friends of the Museum provide vital support to our activities – allowing us to purchase works for the collection, run activities and events, and fund projects which help maintain the museum.

BECOME A FRIEND OF THE MUSEUM

H B WILLIAMS MEMORIAL LIBRARY

Flying Moa – as resilient as a cockroach?

If you have seen one in Gisborne it is likely that shiny cockroach is actually a native Australian. Introduced to Gisborne sometime during the 1960's, drymaplaneta semivittata settled in so well this glossy bug became commonly known as the Gisborne Cockroach. Whilst exterminators make a living out of getting rid of the hideous things other locals have taken on the creepy, 'can't get rid of us' critters as an ironic symbol of the resilience of the district. There was the cockroach repeat pattern fabric designed by Brian Campbell that was menswear du jour during the eighties and the short-lived 'Cockroach: a magazine for Gisborne'. Gerald Barnett, Angela Baker and Gavin Maclean were keen to dispel the notion that 'nothing happens in Gisborne' by establishing a magazine focused on a range of cultural activity in the district. Interviews, art reviews, original drawings and strong ethical commentary demonstrated a keen group of people's interest in community. It was a time when the local Member of Parliament was 1 of 4 in MPs who opposed homosexual law reform. Cockroach came to the fore with opinion and ideas all nestled within its pages alongside notices for active birthing seminars, a ten page interview with the new Anglican minister and a small advert for 'Art Stuff: a quarterly magazine of comment, reviews, interviews, news on the visual arts in Gisborne and East Coast'.

Two self-published magazines running concurrently. In Gisborne. Whilst both these serials offer a window into the important arts issues at the time with a view to covering professional and original artists 'Art Stuff' provided pithier extended reviews of exhibitions including those outside the district. It is clear from articles by Peter Ireland, Gerald Barnett, Ivan Ehau, Christine Page and Norman Maclean that a wave of rather interesting artists and their work was emerging. By June 1986 a teaser featured throughout the magazine. 'Is it a man? Is it a bird? No, it's the Flying Moa' and over the page 'Flying Moa is Gisborne's new Artists' Cooperative – details in September's issue'.

Come September we discover twenty three artists have formed the Flying Moas Art Co-op, have a space in the central city, have had their inaugural exhibition featuring paintings, prints, sculpture, carving, jewellery, pottery and knitwear. They now host the first ever solo exhibition by Juliet Bowen.

Over the next thirty years most of the artists have kept making work, have kept exhibiting and kept in touch. Some have passed away, some have moved to other places but they all feature in the exhibition showing now which demonstrates their work then and now.



Exhibitions, News & Events

Quarterly newsletter of the Tairāwhiti Museum & Art Gallery
Te Whare Taonga o te Tairāwhiti
June 2017 ISSN 117-4975



SHOP

Our shop holds a fabulous range of product to choose from and we continue to add new items. Whether you are looking for a gift, wanting to send something overseas or buy a treat for yourself, there is something for everyone.

We believe there are some wonderful choices for all occasions, so do come and have a look. As always, the museum continues to support local artists including Seymour May, Julia Gould, Hugh Lloyd, Michael Stammers and Christine Page. All purchases at the museum shop provide funding for the museum so not only can you buy a fabulous present, but also support the museum at the same time. Friends of the Museum receive a 10% discount on all purchases (excluding sales).



EXHIBIT CAFE



Great coffee and food, prepared daily, served with a smile. **Exhibit Café** is open for lunches, brunches and morning and afternoon teas. Select from the delicious options on the blackboard menu with gluten free and vegetarian options available. Dine in the sun on wide decks overlooking the park or inside in year round air-conditioned comfort.

Moy Chan and her staff do all the baking on the premises, use predominantly local ingredients and cater to a variety of dietary needs including gluten free options. Exhibit Café offers catering services for meetings, courses and exhibition openings.

10% discount for Friends of the Museum

Opening hours: 10.00am to 2.00pm. Monday to Saturday. Closed Sundays.

Enquiries contact: Moy Chan at the Tairāwhiti Museum on (06) 867 3832. Mob: 027 415 701. Email: moyzie_exhibit@yahoo.co.nz



EXHIBITIONS AND EVENTS : June 2017 - August 2017

RECOVERY: Women Who Served Overseas In World War One

24 March 2017 – 16 July 2017

Making visible the work that New Zealand women undertook overseas during World War One (WW1) is what this exhibition is about. I wanted to recover a range of New Zealand women's work outside of New Zealand during WW1 as well as the research I undertook to recover their stories.

The women featured have connections to the East Coast. Between 1915 and 1919 they served with the armed services or as volunteers with 12 different service organisations within war zones in Turkey, Egypt, France, Serbia, Greece, Italy, Palestine, East Africa as well as in England. Many were highly decorated. All who served had their lives changed forever. That so many women and men from the East Coast served overseas in WW1 is remarkable for the relatively small population at the time.

Because only a sample of the women could be included in the Exhibition I have written a 172 page illustrated book providing further detail plus annotated profiles of other women from the East Coast who served overseas in WW1.

This exhibition is the result of collaboration between the Tairāwhiti Museum, the Eastern Institute of Technology (EIT), *The Gisborne Herald* and the Nurses and Midwives of Tairāwhiti (NAMOT).

Kay Morris Matthews



Flying Moas Gisborne Arts Collective 1986 – 1995

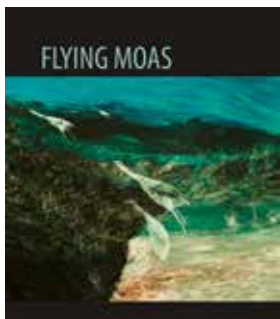
17 June 2017 – 13 August 2017
Opening 5.30pm 16 June

In the US of A during the '80s, the graffiti outpouring of Neo-Expressionists Jean-Michel Basquiat and Keith Haring made a dramatic shift from the ubiquitous streets of New York to the premier art gallery circuit.

In a similar timeframe, with a quick change of scenery, we relocate to the Gisborne art scene where a small group of artist enthusiasts have become enlivened with a healthy dose of '80s swagger. From group discussions a plan evolves offering a wider audience access to and acknowledgment of the neighbourhood 'avant-garde'.

This small band of artists quickly increases in size and is just as quickly baptised the 'Flying Moas'. They become a beacon for all things arty. The 'Flying Moas' gallery once established becomes a hub for rapid fire exhibition changes, awash with social commentary and standing room only at opening nights.

We now relive this productive era with artworks selected from 1986 – 1995 to the present day. From the original group of thirty, 21 Moas participate, an event marked by an insightful publication by Sheridan Gundry that tracks the historical flight path of the Flying Moas, available for purchase with grateful thanks to sponsors the Friends of the Museum.



FLYING MOAS, publication by Sheridan Gundry that tracks the historical flight path of the Flying Moas, available for purchase, only \$35.

100 Days Show - Gisborne

24 June 2017 – 10 December 2017
Opening 5.30pm 23 June

Founded in 2011 the 100 Days Project is an annual event that runs, (you guessed it!), for 100 consecutive days. The brainchild of this project, New Zealand graphic designer Emma Rogan, says, 'in order to survive this 100 day marathon you need to be disciplined, have creative flexibility and lots and lots of energy'. Other than two simple rules - choose one creative activity to repeat every day for 100 days, and record each daily effort - there is no skill pre-requisite, no age restriction, no fees and you can participate from anywhere in the world.

100 Days Show - Gisborne sees eight artists from this region and their projects from 2016, with some artists adding works from previous years' 100-day projects. The show kicks off with a group exhibition, followed by solo exhibitions by each individual artist. For some exhibitors workshops for children and in-gallery art demonstrations may accompany these exhibitions.

-Lina Marsh



Long-term Exhibitions



Watersheds | Ngā Wai Pupū
Encounter famous people, significant events, interesting places and wonderful objects that tell the stories of arrival, survival, struggle and transformation which have shaped Tairāwhiti.

Te Moana Maritime Gallery
Glimpse into 1000 years of maritime myths, legends, stories and development in the Tairāwhiti East Coast region.



The Star of Canada
Explore the two-storied wheel-house and captain's cabin of the Star of Canada, a cargo steamer wrecked on rocks on the Gisborne foreshore on 23 June 1912.



Wyllie Cottage
Visit Wyllie Cottage, the oldest European house still standing in the Gisborne area. Recently restored with new displays.

100 Days Show - Gisborne

24 June 2017 – 10 December 2017

Group Exhibition, 23 June - 16 July

Solo Exhibitions:
Katarina & Mary Reedy
50 artworks + 50 poems in between
19 July - 6 August

Terangi Roimata Kutia-Tātaurangi
Toimaikuku - Māori nail art
9 August - 27 August

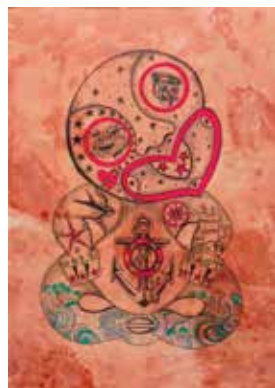
Todd Sheridan
Just Draw
30 August - 17 September

Jo Tito
@wonderingearth
20 September - 8 October

Sarah Kane-Matete
100 contemporary tattoo designs
11 October - 29 October

Julia Hennessy
Myopia
1 November - 19 November

Lina Marsh
100 Hei Tiki + 100 Songs
22 November - 10 December



Day 18: *Hei Tiki Two Bit Punk From Frisco*.
Song of the Day: *Ramones, 'Beat on the Brat'*.
Album: *Ramones, 1976*.
Lina Marsh 2016

Jack C Richards Decorative Arts Gallery

A new addition to the gallery this month is the beautiful art deco sculpture, *Young Lady with Gazelle*, by French artist Charles Barberis.

Seen alongside the glassware of fellow Art Deco artist René Lalique, we have a glimpse into a period known for its exceptional decorative sculpture. *Young Lady with a Gazelle* combines classical influences with favourite motifs of the Art Nouveau and Art Deco periods.

A Parisian, Charles Barberis studied classical Greek sculpture at the Beaux-Arts Academy and went on to work primarily in France and Madagascar. He participated in the 1927 International Colonial Exhibition and in 1935 completed the famous WW1 memorial Monument aux Morts in Madagascar.

Barberis' salon sculptures, such as *Young Lady with Gazelle*, are rare as he mainly focused on architectural works. Recently acquired by Professor Jack Richards in France, we are delighted to be able to display this work of outstanding Art Deco sculpture in Gisborne, and in New Zealand, for the first time.



Gisborne Artists' and Potters Group

19 August 2017 – 24 September 2017
Opening 5.30pm 18 August

Painters can have a reputation for being reclusive. Unless they are inclined to draw or paint in public, no one but their immediate family or friends are likely to see them in action or results of their efforts.

The annual Gisborne Artists' Society and Gisborne Pottery Group exhibition is an opportunity for artists to show the locals what they have been up to over the previous year.

Artists to look out for this year include landscape artists Roger Shanks and Graeme Nicoll. Erika Holden, who is well known on the local scene can be relied upon to submit art which is original and visually stimulating. Based in Tokomaru Bay, Philippa Knight creates beautiful paintings, which are often picked up quickly by the discerning art enthusiast. Two of Gisborne's young, up-and-coming local artists to look out for are Amber Graham and Isabella Grant.

Artists enjoy producing art for the sake of it, but it is always more gratifying when others view and appreciate the end result. Make sure you pop in and check the exhibition out.

-Chris Smith



Autumn Fantasy by Heather Van Wyk

Recent Acquisitions 2015 – 2017

24 August 2017 – 24 September 2017

The Tairāwhiti Museum's fine arts collection is bespoke for this region, and to be shared in perpetuity. The cornerstone for developing a meaningful museum collection is proactive and selective gathering and preserving of historical 'values'.

Continued growth of the fine arts collection is often due to the generosity of sponsors and donors. Accepting incoming works is not a given no matter how generous an offer. All must first be processed and measured for their significance, relevance, educational worth and whether storage requirements are adequate. In a public collection, an artwork should ideally lend itself to a myriad of differing uses, becoming more than the artist's statement.

This exhibition of artworks or 'values' has been selected from works gathered since 2015. They explore uncharted chapters that thread and whisper through the fabric of local communities, encapsulating signature styles that most local visitors will instantly respond to and recognize.



York Hutchinson by Allan Barns-Graham

Gladstone Road



Gladstone Road, named after British Prime Minister William Ewart Gladstone, has been the main street of Gisborne (Tūranga) since its establishment in the late 1860s. Hotels, banks, retailers, churches, halls, theatres, a post office, a courthouse, a newspaper have all resided on Gladstone Road.

The popularity of Gladstone Road has ensured its capture by way of photography. The museum photographic collection has a good coverage of the central business area over a number of decades. The Gladstone Road exhibition features some of the more interesting images of the road and the buildings associated with it.

In 1975 a photographic survey of Gladstone Road from Reads Quay to Roebuck Road was made by a university student and donated to the museum. A similar survey was made in 1993. Maybe it is time to produce another? The 1975 photographs will be 'merged' together resulting in a long continuous view of each side of Gladstone that runs along the walls of the photographic gallery.

Intervention Series John Roy

Tauranga based artist John Roy is noted for his highly decorative, figurative ceramics. His current touring 'intervention series' are wall-based installations which occupy spaces in unexpected ways.

'I see interventions as an interesting way of creating dialogues with gallery space, how we look at the space. These ceramic works act as colourful abstract patterns creeping across the wall or lurking in corners. In this way the installation has multiple interpretations depending on personal experiences.'



Exile

Mahunga

Family photographs are one of our greatest personal treasures. The family photo album is the one item people consider they would 'grab' in a fire. We see them as a collection of life's memories rather than an assemblage of images.

The Mahunga Collection depicts the establishment of the Mahunga farm station situated on the Te Wera Road near Matawai. The images transport us to the early 1900s and an insight to family and farming life in an isolated rural environment



Mahunga



The Gisborne Herald, photographer Rebecca Grunwell