

BECOME A FRIEND OF THE MUSEUM

Friends of the Museum provide vital support to our activities – allowing us to purchase works for the collection, run activities and events, and fund projects which help maintain the museum.

As a friend you can take advantage of free admission to the museum, a 10% discount in the museum shop and on exhibition purchases, as well as invitations to exhibition previews and exclusive events.

We are also delighted to announce that Friends of the Museum will now be able to receive a 10% discount off the usual price for art supplies and framing from Personality Framers, 118 Bright Street, Gisborne, on presentation of their membership card. We hope you will take advantage of this offer and support a fantastic local business. Thank you Dominic and Dawn for partnering with us!

UPCOMING EVENTS

28 September – 9 October 2015
School holiday activities at the museum – booked sessions.

11 October 2015, 1.30pm
Free Sunday afternoon concert, Katharine McIndoe (vocal) and Xing Wang (piano) from New Zealand School of Music. Generously supported by Dr Jack Richards.

28 and 29 October 2015
Heartlanders: New Zealanders of the Great War presented by the National Army Museum.
An exhibition travelling in containers, bringing the stories of our brave soldiers back home to the communities where their journey began.
Grey Street Carpark
Free entry, open to the public, 10am – 6pm

Event details on Facebook, or contact us for more information.

FACEBOOK

Like us on Facebook to keep up to date with stories, events and goings-on at Tairāwhiti Museum.
<https://www.facebook.com/tairawhitimuseumgisborne>



FROM THE DIRECTOR

Whaowhia te kete mātauranga *Fill the basket with knowledge.*

One of Tairāwhiti Museum's most important roles in our community is supporting education outcomes for our young people.

Back in 1905 when the new Gisborne Central School opened, it had its own museum, set up by headmaster FJ Rowley. It remained there until 1954, when many of its treasures were transferred to the newly established Gisborne Museum. By 1975, two years before the present building was opened, the museum, alongside the Christchurch Art Gallery, ran one of the biggest education programmes in New Zealand.

The museum, its exhibitions and collections provide a fantastic resource for learning. While most of our education programmes take place at the museum, our educators also regularly visit schools, marae, and other museums across Tairāwhiti.

The Ministry of Education funds this free service through its 'Learning Experiences Outside the Classroom' curriculum support programme, and we are able to offer a wide range of sessions on subjects from art, through to social sciences, all with a focus on discovering and learning from the 'real thing'.

Tairāwhiti Museum's education programme is well supported by our local schools, and has a great reputation within the network of museum education programmes across New Zealand. While our Educators, Amber and Aaron are the face of education, it is a team effort and all the staff support our programmes, whether it's making collections available to classes, or providing subject expertise.

This year many schools have been studying the First World War, and over 2,500 students have participated in programmes at the museum. We couldn't deliver these programmes without the support of Ngā Taonga a Ngā Tama Toa Trust and their fantastic new facility – C Company Memorial House; East Coast Museum of Technology and the Gisborne Artists' Society.

In the past year over 9,500 school students and many more pre-schoolers and accompanying caregivers have participated in programmes. In my first few months as director, I've learnt something new about Tairāwhiti every time I've listened in and participated in an education session, and I always enjoy the excited chatter of young voices when I wander through the galleries during term time, as I hope our visitors do too!

See you at the museum soon.

Eloise Wallace



Wainui School cultural day

Inana - Leonardo Aquinaldo



Exhibitions, News & Events

Quarterly newsletter of the Tairāwhiti Museum & Art Gallery
Te Whare Taonga o te Tairāwhiti
September 2015 ISSN 117-5890



SHOP

Our shop holds a fabulous range of product to choose from and we continue to add new items. Whether you are looking for a gift, wanting to send something overseas or buy a treat for yourself, there is something for everyone.

We believe there are some wonderful choices for all occasions, so do come and have a look. As always, the museum continues to support local artists including Seymour May, Julia Gould, Hugh Lloyd, Michael Stammers and Christine Page. All purchases at the museum shop provide funding for the museum so not only can you buy a fabulous present, but also support the museum at the same time. Friends of the Museum receive a 10% discount on all purchases (excluding sales).



EXHIBIT CAFE



Great coffee and food, prepared daily, served with a smile. **Exhibit Café** is open for lunches, brunches and morning and afternoon teas. Select from the delicious options on the blackboard menu with gluten free and vegetarian options available. Dine in the sun on wide decks overlooking the park or inside in year round air-conditioned comfort.

Moy Chan and her staff do all the baking on the premises, use predominantly local ingredients and cater to a variety of dietary needs including gluten free options. Exhibit Café offers catering services for meetings, courses and exhibition openings.

Opening hours: 10.00am to 3.00pm. Monday to Friday and 10.00am to 2.00pm Saturday. Closed Sundays.

Enquiries contact: Moy Chan at the Tairāwhiti Museum on (06) 867 3832. Mob: 027 415 701. Email: moyzie_exhibit@yahoo.co.nz



C COMPANY MEMORIAL HOUSE



C Company Memorial House opened on 15 November 2014. It has been a very busy time since the doors opened, with over 6000 visitors through the museum, including many school children.

There have been some wonderful comments in the visitors book over that time

Great resource for our museum teachers and schools
Ka hoki nga mahara
A fitting tribute to brave New Zealand Maori soldiers
Oh te hoki nga mahara
Beautiful gallery dedicated to our servicemen
E tangi ana te ngakau, ka ataahua hoki tenei whare
Head held high
Feel blessed to live in this day and age
A beautiful and peaceful place
He mahi rangatira, tena koutou
E kore au e ware ware

C Company Memorial House is open between 12noon and 3pm Tuesday to Saturday. Entry is free.

He kōrero tēnei mō ngā mokopuna *This a story for the grandchildren*

Neke mai moko, come closer to the fire, sit by Nana. All the children who visit C Company want to know the story of 'Colonel Booboo', whose photo is on the wall with the C Company soldiers.

Now moko, 'Booboo' was a brown and white dog very like a fox terrier and he was found on a dead Italian soldier under his army coat. The Italian soldiers fought against us during the war and Booboo was rescued by C Coy soldiers. There were a lot of dogs who were befriended by our soldiers in this part of the world and Booboo was one of these. He would help our soldiers take part in their night-time activities as he knew the lay of the land.

Our soldiers must have all fed Booboo well, so when the time came to come back to New Zealand, Japan Ruru, a soldier from Te Karaka smuggled him on board the ship. Imagine how they had to look after Booboo, he would have had to be fed, taken for exercise, all his bodily wastes would have to be got rid of and most of all he would have had to "bark quietly!" Anyhow he arrived back home and went to live with his owner, Japan Ruru. Japan's little nieces played with Booboo and they told me they wished they had listened to the stories he told them about Booboo. One of the nieces said sadly, Booboo was run over by a truck at Matawai and is buried with their Uncle Japan in Te Karaka.

- Bub Taipana and Win Ruru, C Company Memorial House volunteer coordinators.



Col. Booboo



EXHIBITIONS AND EVENTS : September 2015 - November 2015

Artists and Pottery Group Exhibition

3 July 2015 – 13 September 2015

The Gisborne Artists' Society and Pottery groups' annual exhibition is a culmination of artistic indulgences, art sharing and art making.

Lysnar House studios is at the heart of all this creative energy and for a small fee all are welcome to attend weekly classes. There are the life drawing classes on Monday evenings from 7 to 9 pm with models from the local Backpackers. The Wednesday 'morning' Group, provides opportunities to work with others in a friendly, co-operative environment. Night classes and the occasional exhibition are also on the agenda to make better use of the facilities provided at Lysnar House.

While art may not be as essential as food and shelter, it fulfils an important purpose in our lives. Art, especially that in the visual sense can create a positive ambience in your environment whether you realise it or not.

Gloriously Big Pots Ceramics from the collection

31 July 2015 – 4 October 2015

This exhibition features a selection of large vessels from the Museum's ceramic collection by ceramicists of national and international acclaim.

Local clay worker, Baye Riddell is legendary for his massive pots and sculptures and for his constant crusade in spreading the gospel of ceramic art to a global audience. He has a preference for local clay sourced from his family land at Te Puia Springs and this he says evokes a respect for the material and a sense of connection with his tipuna.

Bruce and Estelle Martin are also legendary. They were among the first potters in New Zealand to make a living from their work. And in 1978 after a pivotal three month stay-over in Japan to follow their passion and interest in Japanese ceramics, they returned to their home in Hastings and built a Japanese-style anagama kiln. The anagama is fueled with firewood, in contrast to the electric or gas-fueled kilns commonly used by most potters. Other selected ceramicists included in this exhibition are Doreen Blumhardt, Nicholas Brandon, Lois Williams, Richard Rogers, Nick Strathers, Toby Strafford and Adrian Cotter.

Sacred Bloodlines Ephraim Russell

17 July 2015 – 11 October 2015

Gisborne artist Ephraim Russell graduated with a Master's degree in Māori visual arts (Hons) in 2014 from Massey University, Palmerston North. In previous years he powered up his artistic skills attending locally established School of Māori Visual Arts, Toihoukura and Te Wānanga o Aotearoa.

Based in Palmerston North since 2009, Russell has set about bringing his art to the local community on a large scale, mural size. He says his work is about positivity, and spreading a good message in a visually appealing way that young people can relate to.

Russell's forthcoming exhibition, *Sacred Bloodlines* - re-traces his genealogy through his great-great-great-grandfather the Hon. Wiremu Pere, member for the Eastern Māori electorate in the 1880s and 1890s, to many focal tipuna, including Toi te Huatahi, Kiwa, Paoa, Kupe, Paieka and Ruapani. The inspiration for this body of work is derived from the Wi Pere Trust logo designed by local artist Derek Lardelli depicting the circular eye.

This Is Who We Are Richard Rogers

28 August 2015 – 29 November 2015

Opening: 5.30pm – Friday 28th August

Gisborne art teacher Richard Rogers says his latest exhibition is a composite of different cultures and touches on the procedures of repatriation.

His technique, which he calls 'sculpture painting', is an adaptation of a process used by Edward Bullmore, one of New Zealand's earliest surrealist visual artists. The assembled work is built from wood before canvas is stretched and formed across it and then finally painted.

Rogers' shows are always dramatic in their visual language and the 25 large sculptural artworks he has prepared enhance his theatrical narratives.

Kermadec Lines in the Ocean

18 September 2015 – 22 November 2015

The Kermadec are a group of small volcanic islands northeast of the North Island situated at the most remote point of New Zealand. They are a nature reserve, uninhabited, except for the main island, Raoul Island which is 'manned' by a Department of Conservation field station.

In 2011 nine artists, Dame Robin White, John Pule, Gregory O'Brien, Elizabeth Thomson, Bruce Foster, Phil Dadson, John Reynolds, Jason O'Hara and Australian Fiona Hall were invited by the Kermadec Initiative of the Pew Environment Group to join them in a journey throughout the Kermadec Region ending with a visit to Tonga. This expedition was set up as a challenge for each of the artists to commit to producing a visual diary articulating their various experiences in this isolated environment.

As a result of this excursion images of ocean inspired art works were funnelled into exhibitions which were then opened in Tonga, on Easter Island, Santiago Chile and around New Zealand.

Tiki Stardust Melanie Tahata

9 October 2015 – 13 December 2015

Opening: 5.30pm - Friday 9th October

Tiki Stardust is the beginning of an adventure. Tiki is a Māori girl. She loves drawing, books, cats and sitting up late to watch 12 O Clock Rock. This exhibition is a prequel, a heraldic vision of rock n roll glory, originally glimpsed through the television in the 1980s.

Six illustrated panels tell the very beginning of Tiki and the invasion of the White Devil. S/he is a glitter clad, gender ambiguous rock god/dess that explodes into Tiki's life. And changes everything.

These vector drawings are the product of an unfettered imagination and Adobe Illustrator. And a very good printer.

About the Artist: Melanie Tahata is a heartbreaker and a soul shaker, since 1973. She graduated from Elam in 1998 with a Bachelor of Fine Arts, and a Bachelor of Arts from Waikato in 2012. Mel works primarily in graphic and installation art. Mel teaches at The Design School in Gisborne, starting her students on the pathway of full time, sustainable creativity. In her spare time, Mel likes to seek out the dark forces and join them on their hellish crusade.



Mt Wharekia - Ian McKelvey



Aotearoa Classique - Baye Riddell



Latent Inhibition - Ephraim Russell



Bro - Richard Rogers



Tafa Tafa - John Pule



Jack C Richards Decorative Arts Gallery

Jack C Richard's collection gallery is a work in progress, with exhibits continually moving from the exhibition site to storage where works are exchanged and then ferried back to the gallery for display.

Linocuts by Leonard Aguinaldo These delicate prints have been selected from a suite of 34 linocuts recently purchased for the Jack C Richards collection. They are by Filipino artist Leonardo Aguinaldo who has a background in architectural drafting.

Aguinaldo has produced a striking series printed on exquisitely thin rice paper, richly detailed with the artist's impressions of the domestic rituals and spiritual culture of the Cordillerans, 'the people of the mountains'. The Cordillerans' ancestral domain stretches across the Cordillera Central a massive mountain range situated in the Philippines.

As is evident in the imagery, the Cordillerans view land as the source of life, an integral part of their cultural identity, Land is considered sacred and tribal land can neither be owned nor sold but must be nurtured to produce life for the communal benefit.

In this body of work indigenous iconography is used to great effect displaying Aguinaldo's profound sensitivity to the integrity of the various aspects of these highland cultures. For the Cordillerans, the loss of their land or their alienation from it equates to loss of life. It is because of this belief that Cordillerans now and in the past have ferociously fought for the right to remain on their land.

Relativity Brown Family

16 October 2015 – 6 December 2015

Opening: 5.30pm – Friday 16th October

Art-working together as a family, *Relativity*, is an ambitious exhibition of artworks by members of Gisborne's creative Brown family exploring the concept of individualism within the family construct.

This exhibition will show new works by Catherine Brown, Romilly Brown and Cat Brown with a special tribute to the late Peter Brown.

Viewers will be treated to an exciting exhibition of vastly varying styles, from neo expressionism and fantasy through to lo-fi and classical fine art.

The artists: **Cat Brown** – is a professional photographer and contemporary artist who paints and draws vibrant and highly colourful artworks exploring pop culture and modern life around the world.

Catherine Brown – captures the colours, textures and design of the everyday objects and also paints architectural and landscape paintings in oil and watercolour capturing the mood of the moment.

Romilly Brown – take a dip in the dark waters of mind-bending fantasy and the surreal with unusual creatures, fantastic worlds and gaming inspired micro sculpture.

Peter Brown – a winner of NZ's prestigious Kelleher Art Award. The late Peter is recognised as one of our country's finest exponents of the classical painting tradition.

Wm. F. Crawford PHOTOGRAPHIC LANDSCAPE ARTIST

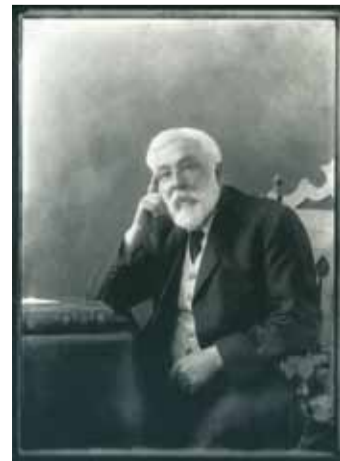
27 November 2015 - 3 April 2016

Opening 5:30pm - Friday 27th November

William Fitzgerald Crawford came to Gisborne in 1874 to brew. He was so successful that he established and built his own brewery. He acquired the Albion Hotel, became the first Mayor of Gisborne, was the fire Superintendent and set up a store on Gladstone Road.

Crawford is best remembered for his photography. For forty years, he lugged his camera and heavy tripod over hills, through valleys, on sea-going vessels and horse-drawn transport to capture the activities of the Gisborne-East Coast region as it developed.

Over 5000 of Crawford's photos have survived and the negatives are in the care of the museum. November 2015 will mark 100 years since Crawford's death and the museum is taking the opportunity to display some of the images from the collection.



Self Portrait - William F. Crawford

Long-term Exhibitions

Watersheds | Ngā Wai Pupū Encounter famous people, significant events, interesting places and wonderful objects that tell the stories of arrival, survival, struggle and transformation which have shaped Tairāwhiti.

Te Moana Maritime Gallery Glimpse into 1000 years of maritime myths, legends, stories and development in the Tairāwhiti East Coast region.



The Star of Canada Explore the two-storied wheel-house and captain's cabin of the Star of Canada, a cargo steamer wrecked on rocks on the Gisborne foreshore on 23 June 1912.



Wyllie Cottage Visit Wyllie Cottage, the oldest European house still standing in the Gisborne area.



Gladstone Road

Gladstone Road, named after British Prime Minister William Ewart Gladstone, has been the main street of Gisborne (Tūranga) since its establishment in the late 1860s.

Hotels, banks, retailers, churches, halls, theatres, a post office, a courthouse, a newspaper have all resided on Gladstone Road.

The popularity of Gladstone Road has ensured its capture by way of photography. The museum photographic collection has a good coverage of the central business area over a number of decades. The Gladstone Road exhibition features some of the more interesting images of the road and the buildings associated with it.

In 1975 a photographic survey of Gladstone Road from Reads Quay to Roebuck Road was made by a university student and donated to the museum. A similar survey was made in 1993. Maybe it is time to produce another? The 1975 photographs will be 'merged' together resulting in a long continuous view of each side of Gladstone that runs along the walls of the photographic gallery.



1975 panorama of Gladstone Road (section) - Richard Howitt

Cameraman With A Mission Hakaraia Pahewa

Whaling in Te Kaha, native schools in Hawke's Bay, marae in the early 1900s, Tokomaru Bay wharf and the cultivation of kūmara are subjects of interest to the camera of Hakaraia Pahewa. Following in the footsteps of his father Matiaha Pahewa, an Anglican priest of Tokomaru Bay, Hakaraia trained at Te Rau Theological College in Gisborne.

As a priest that travelled a lot, Hakaraia's camera was often at hand recording images of everyday life in a soft, often romantic, but purposeful style. Over 30 of his images will be available to view on the stairwell that leads to the Te Moana-Maritime galleries.



Coastal Life 1921 - Hakaraia Pahewa

